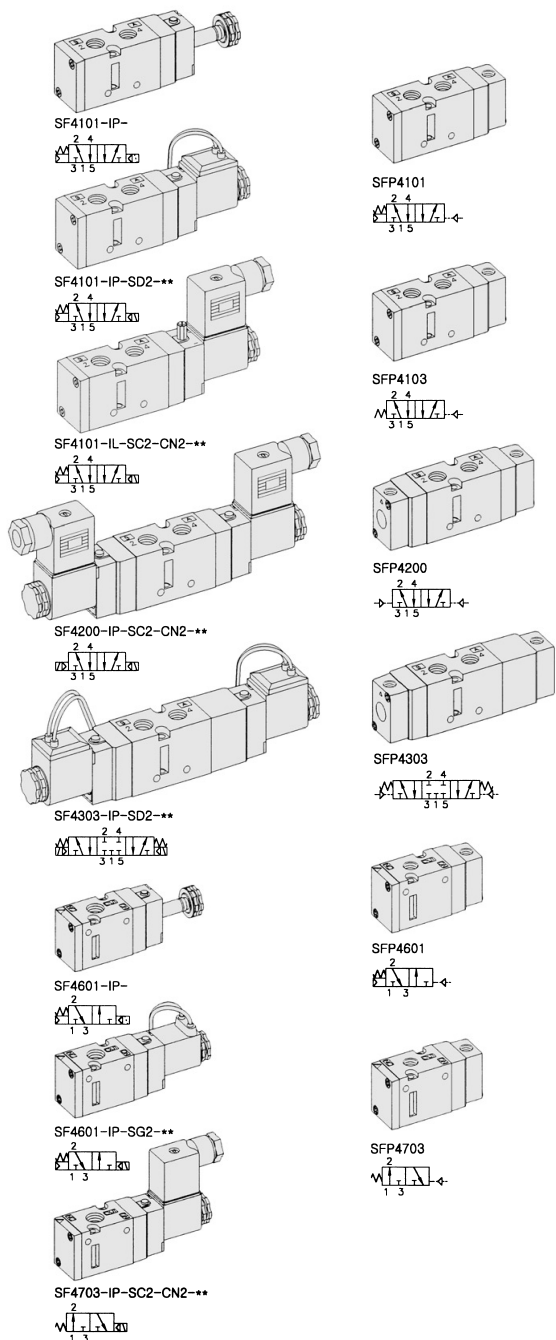


SF4000. 1/4

"F" FLEXIBLE Series
Solenoid / Pneumatic Valves

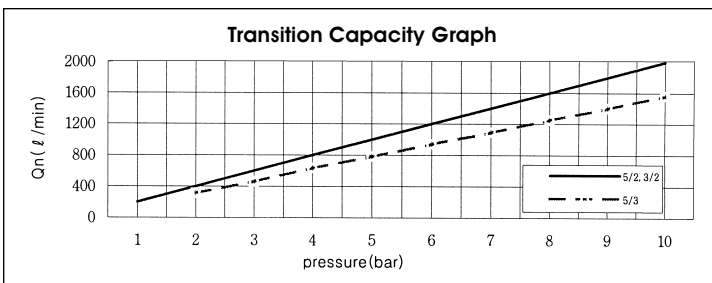
- 5/2, 5/3, 3/2 - 1/4
- 26mm Body Width
- Transition Flow 1000ℓ/min (5bar)



** : Voltage Selection (see page 62)

SPECIFICATION

ITEM	SERIES	SOLENOID, PNEUMATIC	
		FUNCTION	
		5, 3 Port 2 Position	5 Port 3 Position
Fluids		Compressed Air & Inert Gases	
Pressure(bar)		1.5~10.0	2.0~10.0
Eff. Sectional Area(mm ²)-5bar		19.0	11.5
Ambient & Fluid Temp.		5~60°C (41~140°F)	
Response Time(5bar)		25ms or Less	35ms or Less
Max. Working Frequency		5c/sec	3c/sec
Lubrication		Not Required(Use ISO VG32 #)	
Manual Override		Push Button(Standard), Lever Lock(Option)	
Coil Insulation Class		F-Class or Equivalent	
Permissible Voltage Variation		±10% of Rated Voltage	
Off Min. Residual Voltage		AC:20% or Less / DC:10% or Less	
Power Consumption		Holding-AC:5.5VA(60Hz) / DC:2.5W	



The Material of Parts

- Valve Body : Die-Cast Aluminium
- Spool : Aluminium
- Seals : NBR
- Spring : Stainless
- Cap : Zinc Pressure Die-Cast
- Pilot Parts : Glass Filled Nylon
- Armature : Stainless Steel
- Armature Seals : Viton

* The specification on each item can be amended without any prenotice to improve a performance.
* The specification on each item can be different from actual specification.

ORDERING NO.

SF4 1 0 1 - I P - SC2 - CN2 - A2

Valve Series	Function	Port Size & Thread	Return Method	Int/Ext. Pilot	Manual Operator	Solenoid Coil Type	Connector Type	Voltage
SF4 : Solenoid Valve	1 5/2 Single	0 G 1/4	0 None	I Internal Pilot	0 None	0 None	0 None	0 None
	2 5/2 Double	1 NPT 1/4	1 Air + Spring		P Push Non-Locking	SC2 3 Pin Connector Coil	CN2 Normal Connector	A2 AC 220V
	3 5/3 Closed Center		2 Air		L Lever Locking	SG2 Grommet/Flying Leads	CD2 Connector With LED	A1 AC 110V
	4 5/3 Open Center		3 Spring			SD2 Grommet/Flying Leads With LED	CZ2 Connector With LED & Surge Suppressor	A4 AC 24V D4 DC 24V D2 DC 12V
SFP4 : Pneumatic Valve	5 5/3 Pressure Center							
	6 3/2 Normally Closed							
	7 3/2 Normally Open							

Fluir
PNEUMÁTICA

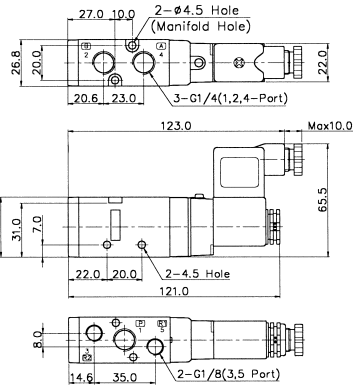
gp3 global
pneumática ltda.

Solenoid & Pilot Actuated Spool Valves

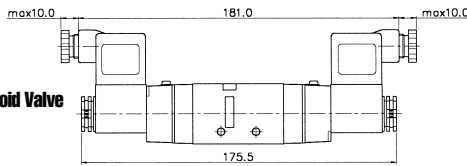
Port Thread 1/4

5Port 2Position Solenoid Valve

Single Solenoid
SF4101-IP-SC2-CN2-***

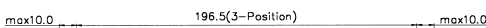


Double Solenoid
SF4200-IP-SD2-***

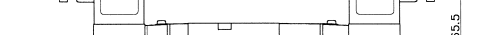


5Port 3Position Solenoid Valve

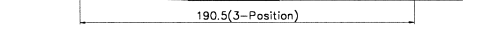
Closed Center
SF4303-IP-SC2-CN2-***



Exhaust Center
SF4403-IP-SC2-CN2-***

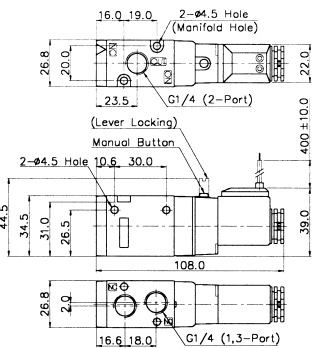


Pressure Center
SF4503-IP-SC2-CN2-***

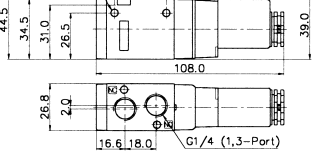


3Port 2Position Solenoid Valve

Normally Closed
SF4601-IP-SD2-***

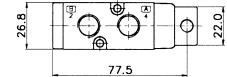


Normally Open
SF4701-IP-SD2-***

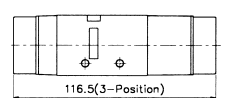
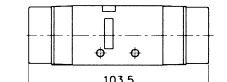
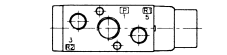
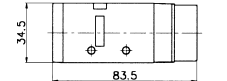


5Port 2Position Pneumatic Valve

Single Pneumatic
SFP4101

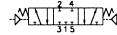


Double Pneumatic
SFP4200

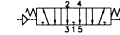


5Port 3Position Pneumatic Valve

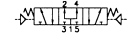
Closed Center
SFP4303



Exhaust Center
SFP4403

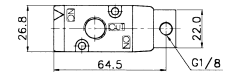


Pressure Center
SFP4503

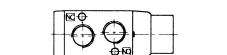
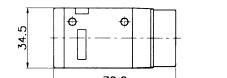


3Port 2Position Pneumatic Valve

Normally Closed
SFP4601



Normally Open
SFP4701



MF4000 MANIFOLD BLOCK

(SF4000 Solenoid & Pneumatic Valve Use)

Manifold Block Ordering Code

MF 4500 - 2

Series	Manifold Station
MF4500	5 Way
MF4300	3 Way

Blanking Plate Ordering Code

MF4500-BLK

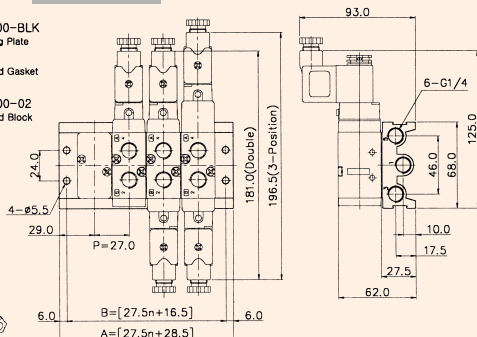
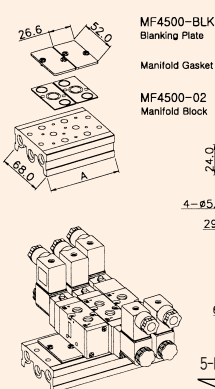


MF4300-BLK



5-Port Manifold Block

MF4500-4

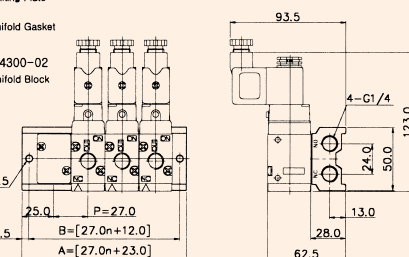
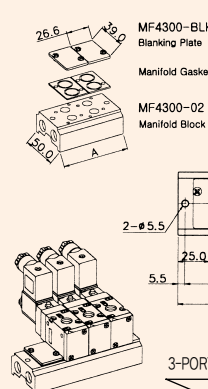


5-PORT MANIFOLD BLOCK DIMENSION n=STATION

ITEM	n	2	4	6	8	10
B		71.5	126.5	181.5	236.5	291.5
A		83.5	138.5	193.5	248.5	303.5

3-Port Manifold Block

MF4300-4



3-PORT MANIFOLD BLOCK DIMENSION n=STATION

ITEM	n	2	4	6	8	10
B		66.0	120.0	174.0	228.0	282.0
A		77.0	131.0	185.0	239.0	293.0